

# International Disaster Resilience Leaders Forum Incheon 2022

2022 인천 국제재난복원력  
지도자 포럼

2022.9.28.-29.  
SONGDO CONVENSA  
GRAND BALLROOM A HALL  
송도 컨벤시아 그랜드볼룸 A홀

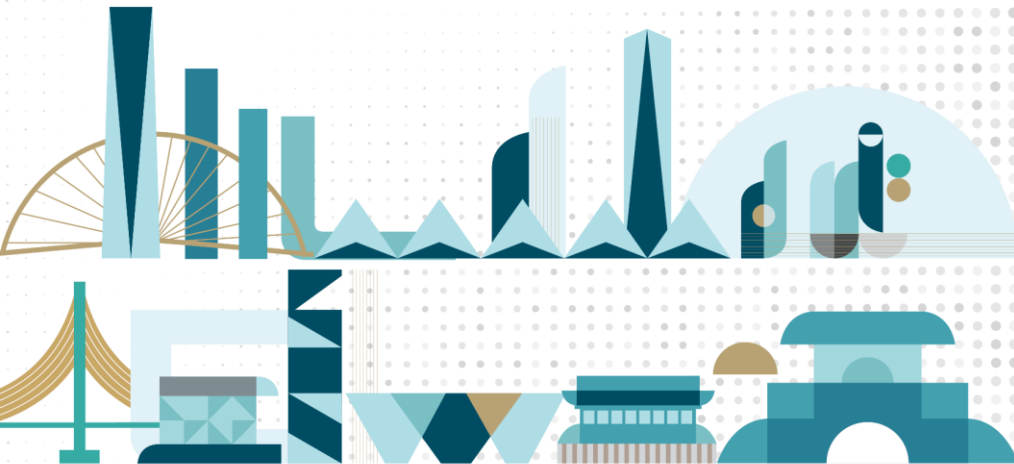
## LEADERSHIP, COOPERATION AND PARTICIPATION IN DRR LOCAL AND NATIONAL PERSPECTIVE

**Luís Carvalho**

Civil Protection-Local Police Commander

MCR 2030 Local Focal Point

Amadora - PORTUGAL



주최

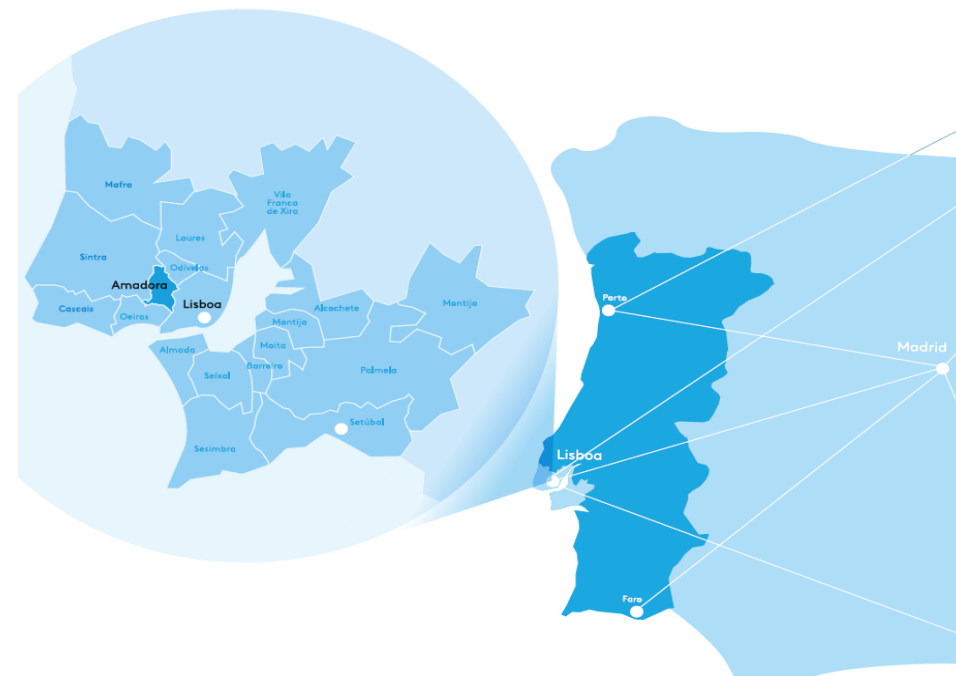


후원



# 1. MUNICIPALITY OF AMADORA

Framework of Lisbon area and Amadora city in Portugal



**POPULATION**  
175.558 inhab.

**POP. DENSITY**  
7.363 inhab/sqkm

**POP. LIVING IN  
SLUMS**  
3,8%

**FOREIGN  
POPULATION**  
10%

**PROPORTION OF THE  
ELDERLYT**  
18,7%



# 1. MUNICIPALITY OF AMADORA

**2000-2020**

**TOTAL: 282.241 emergencies**  
**AVERAGE P/YEAR: 13.440 emergencies**

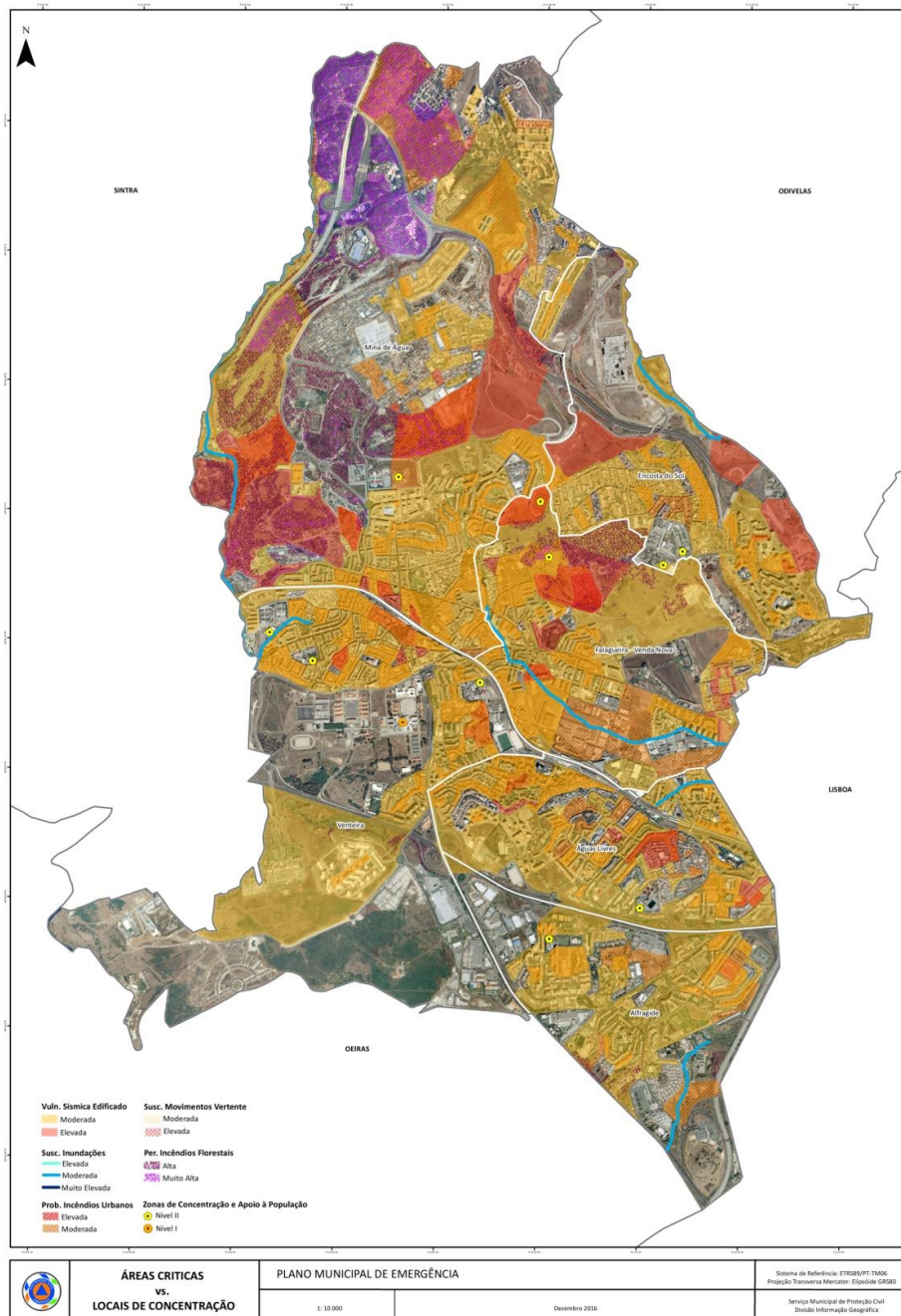


**HIGH RISK**

FLOODS, ROAD ACCIDENTS, URBAN FIRES

**MODERATE RISK**

SEISMIC, LANDSLIDE, TRAIN ACCIDENTS, FOREST FIRES, HEAT WAVES







HAILSTORM | APRIL 2011



URBAN FIRE | MARCH 2019

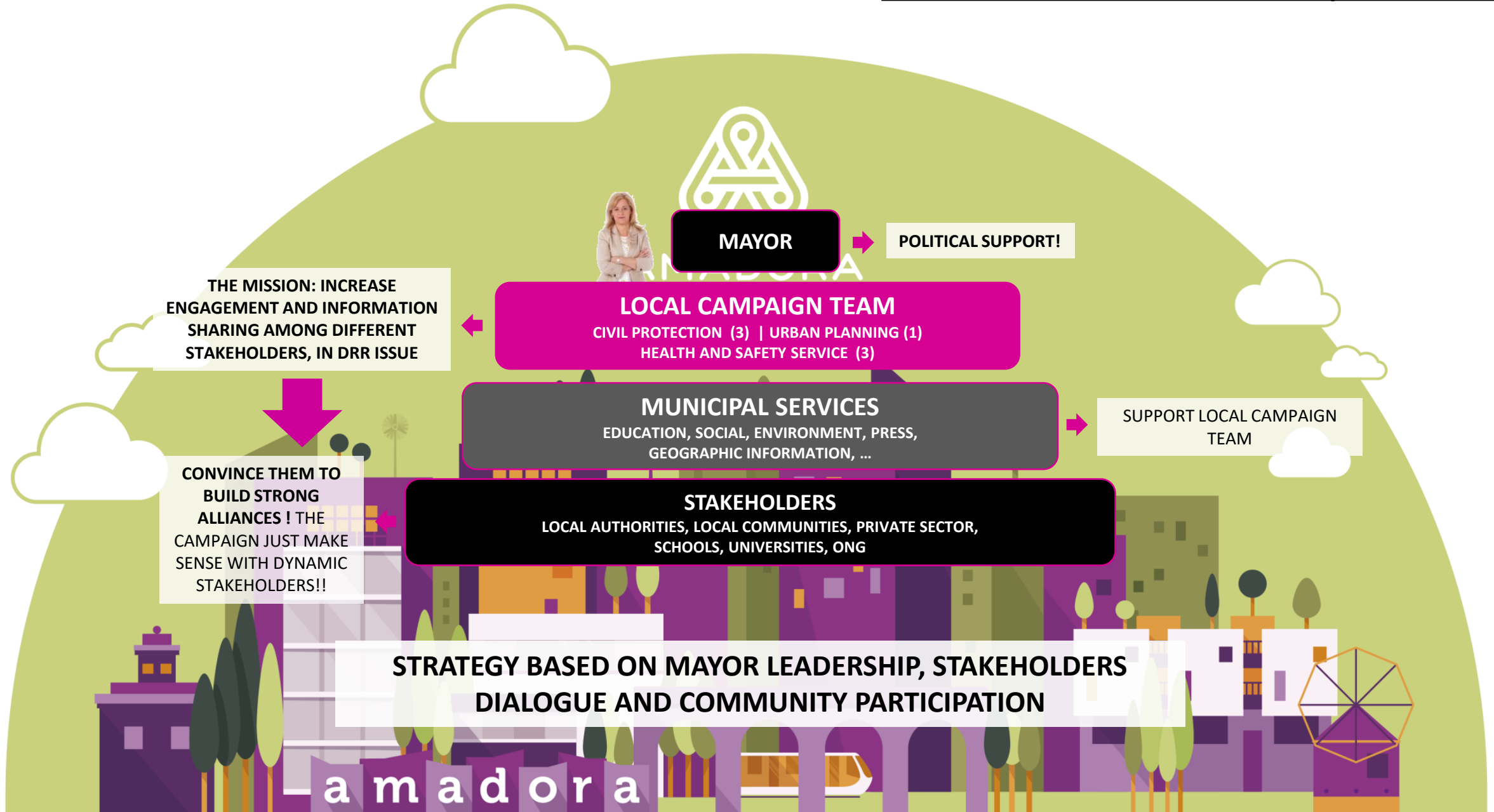


FOREST FIRE | JULY 2021



FLOOD | MAY 2015



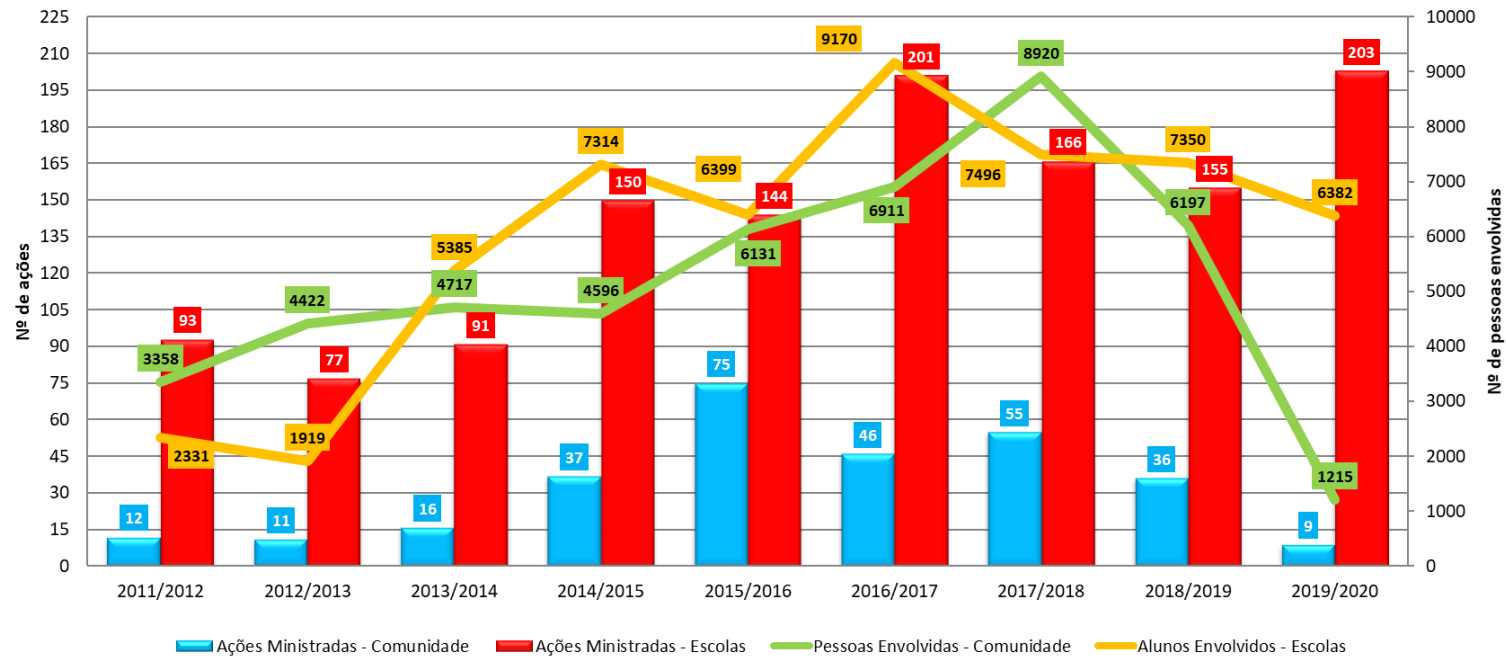




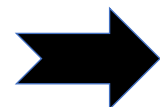
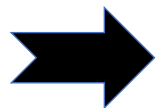


## 2. AMADORA STRATEGY FOR DRR | MCR 2010-2030

Número total de ações e pessoas envolvidas - 2010/2020



### AWARENESS PROGRAM FOR COMMUNITY SINCE 2011



### COMMUNITY TARGETS

Schools  
Public and private institutions

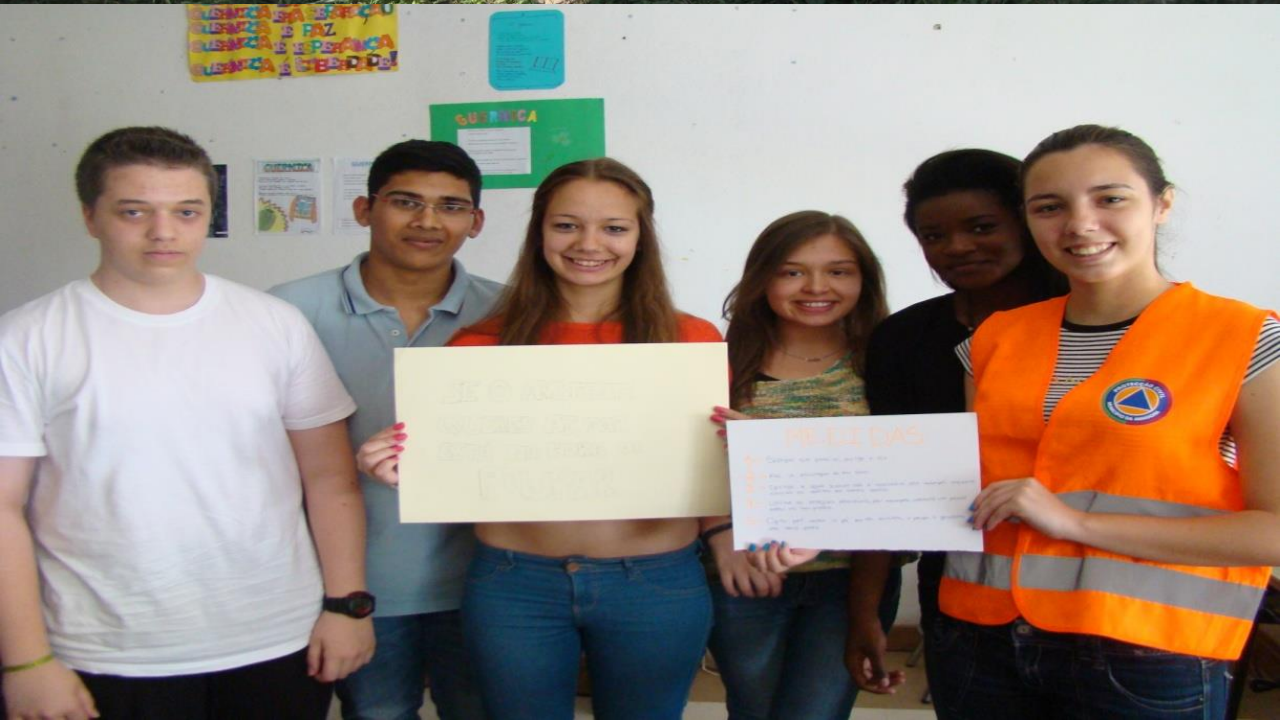
### 22 THEMATIC SESSIONS

(climate change, DRR, mass training, local risks and preventive measures, ...)

### 2011-2020 STATISTICS

1.578 sessions taken  
100.213 people involved









**COMMUNITY PARTICIPATION  
VULNERABLE GROUPS**



### CIVIL PROTECTION ACADEMY



**\_involvement** of seniors from the local community in risk reduction activities (raising awareness in schools);  
**\_logistical support** in disaster response and recovery;  
**\_proactive agents** of prevention among their peers.

### OPERATIONAL DRILLS



**\_articulated operational work**  
**\_regularity and involvement** of the population and vulnerable groups in the scenarios

### EARLY WARNING SYSTEM



**\_31.282 SMS sent**  
**\_\_fast delivery of weather warnings** and civil protection recommendations





**RISK COMMUNICATION  
COMMUNITY**





WG 1 - Safety assessment for schools

WG 2 - Experts in post-earthquake structural damage assessment

#### WG 3 - Resilient Cities

WG 4 - Critical Infrastructures

WG 5 - Damage Databases

WG 6 - Cultural Heritage

\_Amadora coordinates WG 3 since 2015;  
\_Currently the group has 39 cities



#### WG 3 – RESILIENT CITIES

- \_sharing work methodologies between national resilient cities in DRR and resilience context;
- \_dissemination of cities good practices;
- \_reinforces the need of political, operational and technical involvement for in the process of resilient cities;
- \_technical staff training in order to empower local structures for local resilience plans;





**NATIONAL RESILIENT CITIES  
TRAINING**

1. All we know that the common concepts in our daily routine are: **CRISIS** and **EMERGENCY** (social, economy, climate, environmental);
2. **Local work/action, in cities, is essential for disaster risk reduction.** The first level of resilience intervention is in local communities (prevention + rescue + recovery). If we have resilient cities, we have resilient countries!
3. **We have not been able to anticipate the impacts** of the multiple risks that exist in our cities and countries.
4. **Solution = networking:** local stakeholders vs local government; local government vs. national government vs national stakeholders; national government vs. international agencies.



# Thank you

**Luís Carvalho**

Civil Protection-Local Police Commander

MCR 2030 Local Focal Point

Amadora - PORTUGAL

<https://www.facebook.com/amadora.resiliente>